



Gas wall hung compact boilers

Compact dimensions

Compactness and easiness of use

EcoFour, can be easily fitted in a cupboard thanks to its compact dimensions (730x400x299). EcoFour is available in fanned flue and open flue versions with an output up to 24 kW. The wide LCD display and digital push-buttons enable to show immediately all the information required.



ECOFOUR					
240F	combi, fanned flue	24 kW			👉
24	combi, open flue	24 kW			👉
1.24 F	heating only, fanned flue	24 kW			
1.14 F	heating only, fanned flue	14 kW			
1.24	heating only, open flue	24 kW			
1.14	heating only, open flue	14 kW			

ECOFOUR



IPx5D



- Compact dimensions (730x400x299 mm)
- Digital control panel with LCD wide display and push-buttons
- Hydraulic group made of brass with electric 3 way valve
- DHW production through stainless steel exchanger
- Full anti-frost device
- Outdoor sensor option

The new digital control panel with LCD display and push-buttons, make the boiler's working check easy and immediate: clear and simple symbols allow to show all boiler's parameters and anomalies that may occur

Hydraulic systems

- 3 way diverter valve
- Steel burner
- Primary exchanger made of copper pipes protected with anticorrosion coating
- Stainless steel DHW heat exchanger
- Automatic by-pass
- System to prevent pump and diverter 3 way valve sticking operating every 24 hours
- Heating circuit relief valve set at 3 bar

Thermoregulation system

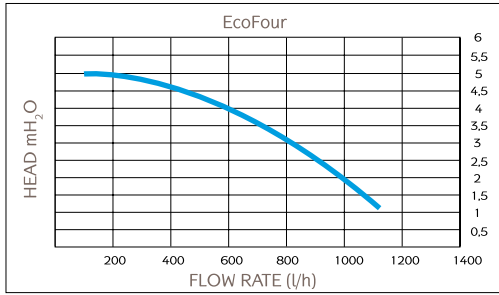
- Two heating temperatures possible ranges: 35/80°C, 30/45°C
- Built-in climatic regulation (outdoor sensor available as optional)

Control system

- Overheat limit thermostat for the water/flue exchanger
- Hydraulic pressure switch to prevent boiler's operating in event of low water
- Pressure switch to ensure safe discharge of flue products (fanned flue models)
- Flue thermostat to ensure safe discharge of flue products (open flue models)
- Electronic temperatures control by NTC sensors
- Full anti-frost device
- Electronic thermometer
- Heating circuit pressure gauge

		Combi		Heating only *			
		Fanned flue	Open flue	Fanned flue	Fanned flue	Open flue	Open flue
		24 F	24	1,24 F	1,14 F	1,24	1,14
Maximum heat input	kW	25,8	26,3	25,8	15,1	26,3	15,4
Minimum heat input	kW	10,6	10,6	10,6	7,1	10,6	7,1
Maximum heat output	kW	24	24	24	14	24	14
Minimum heat output	kW	9,3	9,3	9,3	6,0	9,3	6,0
Maximum efficiency	%	92,93	91,20	92,93	92,50	91,20	90,90
Energetic efficiency (92/42/CEE)		★★★	★★	★★★	★★★	★★	★★
Efficiency at 30%	%	90,37	89,30	90,37	89,80	89,30	88,60
Minimum working temperature	°C	-5	-5	-5	-5	-5	-5
Expansion vessel capacity/pre-charge	l/bar	6/0,5	6/0,5	6/0,5	6/0,5	6/0,5	6/0,5
Maximum capacity of the heating system	l	100	100	100	100	100	100
Heating system max pressure	bar	3	3	3	3	3	3
Regulation of water temperature in heating circuit	°C	30/45 30/85	30/45 30/85	30/45 30/85	30/45 30/85	30/45 30/85	30/45 30/85
Regulation of water temperature in DHW circuit	°C	30/60	35/60	5/60	5/60	5/60	5/60
Specific flow according to EN 625	l/min	10,7	10,7	-	-	-	-
DHW production ΔT 25°C	l/min	13,7	13,7	-	-	-	-
Minimum capacity DHW flow rate	l/min	2,0	2,0	-	-	-	-
Maximum pressure on DHW circuit	bar	8	8	-	-	-	-
Flue tube	Ø mm	-	120	-	-	120	110
Coaxial flue system Ø 60/100 max length	m	5	-	5	5	-	-
Dual flue system Ø 80 max length	m	30	-	30	30	-	-
Maximum flue mass flow rate	kg/s	0,014	0,020	0,014	0,012	0,020	0,014
Minimum flue mass flow rate	kg/s	0,014	0,018	0,014	0,012	0,018	0,013
Maximum flue temperature	°C	146	110	149	115	110	99
Dimensions (h x w x d)	mm	730x400x299					
Net weight	Kg	33	29	32	31	28	26
Gas type		Natural gas/LPG					
Grade of protection		IPX5D	IPX5D	IPX5D	IPX5D	IPX5D	IPX5D

*Heating only models are connectable to UB-UB INOX 80/120 lt



EcoFour 24 F, 1.14 F, 1.24 F

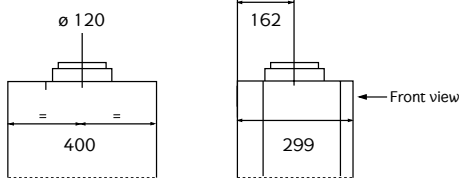


EcoFour 24, 1.14, 1.24



Flue systems

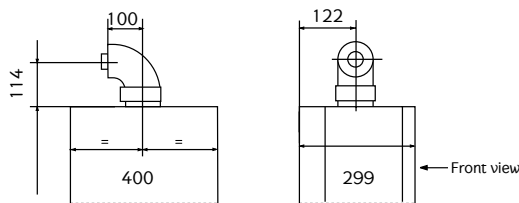
Open flue



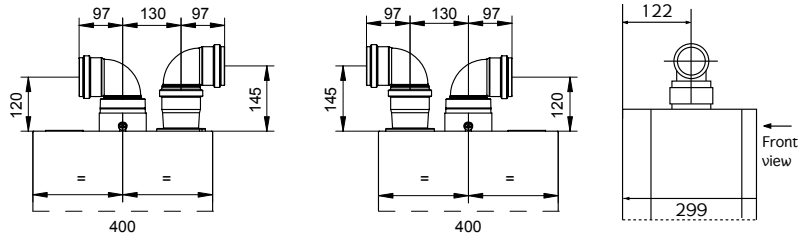
MR Heating system flow G 3/4"
 US DHW outlet G 1/2"
 GAS Gas inlet G 3/4"
 ES Mains water G 1/2"
 RR Heating system return G 3/4"

A: Boiler hanging points.
 Distance between hanging points: 343 mm
 B: Distance between hanging points and hydraulic connection

Fanned flue Coaxial flue system



Dual flue system



	Max length without terminal (m)	Length reduction with a 90° bend insertion (m)	Length reduction with a 45° bend insertion (m)	Flue discharge Ø (mm)
Coaxial duct	5	1	0,5	60-100
Separate ducts	installation with wind proof terminal	30	0,5	80
	installation with chimney terminal	15	0,5	133



Quality
Environment
Safety

are Baxi strategic aims and the awarded certifications ensure compliance with the specific regulations

www.baxi.it

BAXISPA

36061 BASSANO DEL GRAPPA (VI)
 Via Trozzetti, 20
 Tel. +39 0424 517111 - Fax: +39 0424 38089
marketing@baxi.it

The Company assumes no responsibility for any possible contents mistakes, and reserves the right to make changes in products, due to technical or commercial demands, at any time without notice.

Baxi S.p.A. 12-10 (E)